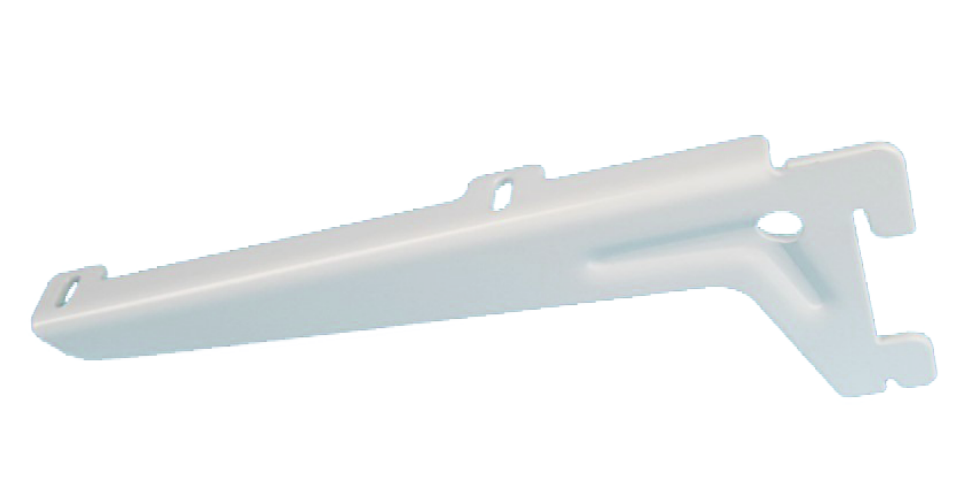
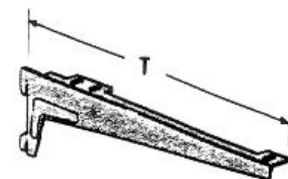


SISTEMA DI ARREDAMENTO - MENSOLE



- In acciaio verniciato.
- Portata 55 kg alla coppia.



Base Di Appoggio Per Mensola	N° Di Agganci	Art.
180 mm	2	F3962 804 1
280 mm	2	F3962 804 2
380 mm	2	F3962 804 3
480 mm	3	F3962 804 4