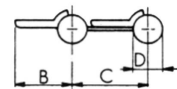
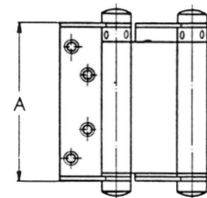


CERNIERE CON MOLLA A DOPPIA AZIONE



- In acciaio.
- Pomoli cilindrici.
- 8 fori per viti TPS Ø 4 mm.



Finitura	A	B	C	D	Portata Max	Art.
nichelata	75 mm	35 mm	50 mm	21 mm	18 kg - a coppia	<b>F3683 131 3</b>
ottonata	100 mm	37 mm	55 mm	21 mm	25 kg - a coppia	<b>F3683 132 1</b>
nichelata	100 mm	37 mm	55 mm	21 mm	25 kg - a coppia	<b>F3683 132 3</b>