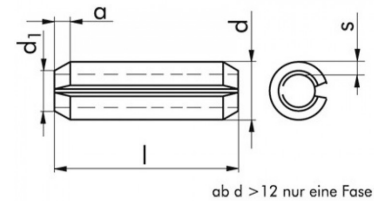


SPINE ELASTICHE GREZZE



Spine elastiche

- A norma DIN 1481/ISO 8752
- In acciaio per molle grezzo



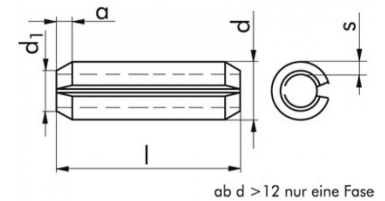
Ø	Lunghezza	Art.
1,5	10	F0475 15 10
1,5	12	F0475 15 12
1,5	16	F0475 15 16
1,5	18	F0475 15 18
1,5	20	F0475 15 20
1,5	5	F0475 15 5
1,5	6	F0475 15 6
1,5	8	F0475 15 8
2	10	F0475 2 10
2	12	F0475 2 12
2	14	F0475 2 14
2	16	F0475 2 16
2	18	F0475 2 18
2	20	F0475 2 20
2	22	F0475 2 22
2	24	F0475 2 24
2	28	F0475 2 28
2	30	F0475 2 30
2	5	F0475 2 5
2	6	F0475 2 6
2	8	F0475 2 8
2,5	10	F0475 25 10
2,5	12	F0475 25 12
2,5	14	F0475 25 14
2,5	16	F0475 25 16
2,5	18	F0475 25 18
2,5	20	F0475 25 20
2,5	24	F0475 25 24

SPINE ELASTICHE GREZZE



Spine elastiche

- A norma DIN 1481/ISO 8752
- In acciaio per molle grezzo



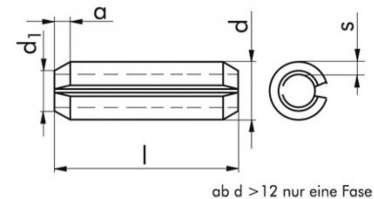
Ø	Lunghezza	Art.
2,5	26	F0475 25 26
2,5	28	F0475 25 28
2,5	30	F0475 25 30
2,5	36	F0475 25 36
2,5	40	F0475 25 40
2,5	8	F0475 25 8
3	10	F0475 3 10
3	12	F0475 3 12
3	14	F0475 3 14
3	16	F0475 3 16
3	18	F0475 3 18
3	20	F0475 3 20
3	22	F0475 3 22
3	24	F0475 3 24
3	26	F0475 3 26
3	28	F0475 3 28
3	30	F0475 3 30
3	32	F0475 3 32
3	36	F0475 3 36
3	4	F0475 3 4
3	40	F0475 3 40
3	45	F0475 3 45
3	50	F0475 3 50
3	6	F0475 3 6
3	60	F0475 3 60
3	8	F0475 3 8
3,5	12	F0475 35 12
3,5	16	F0475 35 16

SPINE ELASTICHE GREZZE



Spine elastiche

- A norma DIN 1481/ISO 8752
- In acciaio per molle grezzo



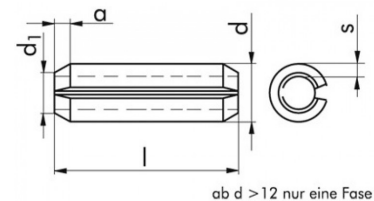
Ø	Lunghezza	Art.
3,5	20	F0475 35 20
3,5	22	F0475 35 22
3,5	24	F0475 35 24
3,5	26	F0475 35 26
3,5	30	F0475 35 30
3,5	36	F0475 35 36
3,5	40	F0475 35 40
3,5	50	F0475 35 50
3,5	60	F0475 35 60
4	10	F0475 4 10
4	12	F0475 4 12
4	14	F0475 4 14
4	16	F0475 4 16
4	18	F0475 4 18
4	20	F0475 4 20
4	22	F0475 4 22
4	24	F0475 4 24
4	25	F0475 4 25
4	26	F0475 4 26
4	80	F0475 4 28
4	30	F0475 4 30
4	32	F0475 4 32
4	35	F0475 4 35
4	36	F0475 4 36
4	40	F0475 4 40
4	45	F0475 4 45
4	5	F0475 4 5
4	50	F0475 4 50

SPINE ELASTICHE GREZZE



Spine elastiche

- A norma DIN 1481/ISO 8752
- In acciaio per molle grezzo



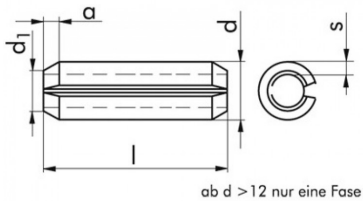
Ø	Lunghezza	Art.
4	6	F0475 4 6
4	60	F0475 4 60
4	70	F0475 4 70
4	8	F0475 4 8
4,5	24	F0475 45 24
4,5	28	F0475 45 28
4,5	30	F0475 45 30
4,5	32	F0475 45 32
4,5	36	F0475 45 36
4,5	40	F0475 45 40
4,5	50	F0475 45 50
5	10	F0475 5 10
5	12	F0475 5 12
5	14	F0475 5 14
5	16	F0475 5 16
5	18	F0475 5 18
5	20	F0475 5 20
5	24	F0475 5 24
5	25	F0475 5 25
5	26	F0475 5 26
5	28	F0475 5 28
5	30	F0475 5 30
5	32	F0475 5 32
5	35	F0475 5 35
5	36	F0475 5 36
5	40	F0475 5 40
5	45	F0475 5 45
5	50	F0475 5 50

SPINE ELASTICHE GREZZE



Spine elastiche

- A norma DIN 1481/ISO 8752
- In acciaio per molle grezzo



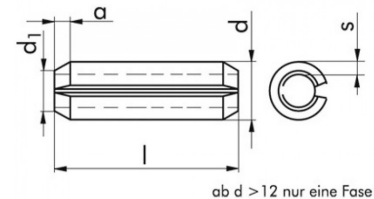
Ø	Lunghezza	Art.
5	55	F0475 5 55
5	60	F0475 5 60
5	65	F0475 5 65
5	70	F0475 5 70
5	75	F0475 5 75
5	80	F0475 5 80
6	10	F0475 6 10
6	100	F0475 6 100
6	12	F0475 6 12
6	14	F0475 6 14
6	16	F0475 6 16
6	18	F0475 6 18
6	20	F0475 6 20
6	22	F0475 6 22
6	24	F0475 6 24
6	25	F0475 6 25
6	26	F0475 6 26
6	28	F0475 6 28
6	30	F0475 6 30
6	32	F0475 6 32
6	35	F0475 6 35
6	36	F0475 6 36
6	40	F0475 6 40
6	45	F0475 6 45
6	50	F0475 6 50
6	55	F0475 6 55
6	60	F0475 6 60
6	65	F0475 6 65

SPINE ELASTICHE GREZZE



Spine elastiche

- A norma DIN 1481/ISO 8752
- In acciaio per molle grezzo



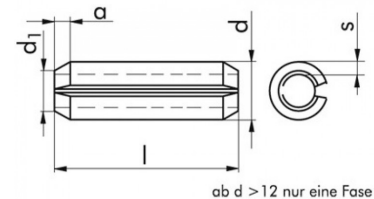
Ø	Lunghezza	Art.
6	70	F0475 6 70
6	80	F0475 6 80
6	90	F0475 6 90
7	40	F0475 7 40
7	50	F0475 7 50
7	60	F0475 7 60
7	65	F0475 7 65
7	70	F0475 7 70
7	80	F0475 7 80
7	90	F0475 7 90
8	10	F0475 8 10
8	100	F0475 8 100
8	110	F0475 8 110
8	12	F0475 8 12
8	120	F0475 8 120
8	16	F0475 8 16
8	20	F0475 8 20
8	22	F0475 8 22
8	24	F0475 8 24
8	26	F0475 8 26
8	28	F0475 8 28
8	30	F0475 8 30
8	32	F0475 8 32
8	35	F0475 8 35
8	36	F0475 8 36
8	40	F0475 8 40
8	45	F0475 8 45
8	50	F0475 8 50

SPINE ELASTICHE GREZZE



Spine elastiche

- A norma DIN 1481/ISO 8752
- In acciaio per molle grezzo



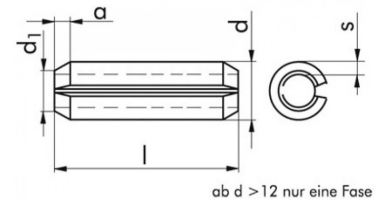
Ø	Lunghezza	Art.
8	55	F0475 8 55
8	60	F0475 8 60
8	65	F0475 8 65
8	70	F0475 8 70
8	75	F0475 8 75
8	80	F0475 8 80
8	90	F0475 8 90
9	50	F0475 9 50
9	60	F0475 9 60
9	70	F0475 9 70
9	80	F0475 9 80
9	90	F0475 9 90
10	100	F0475 10 100
10	110	F0475 10 110
10	12	F0475 10 12
10	120	F0475 10 120
10	14	F0475 10 14
10	140	F0475 10 140
10	16	F0475 10 16
10	160	F0475 10 160
10	18	F0475 10 18
10	20	F0475 10 20
10	24	F0475 10 24
10	26	F0475 10 26
10	26	F0475 10 28
10	30	F0475 10 30
10	32	F0475 10 32
10	36	F0475 10 36

SPINE ELASTICHE GREZZE



Spine elastiche

- A norma DIN 1481/ISO 8752
- In acciaio per molle grezzo



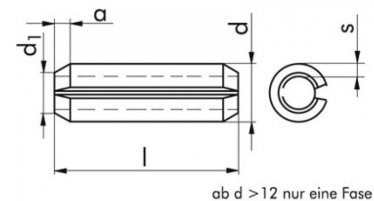
Ø	Lunghezza	Art.
10	40	F0475 10 40
10	45	F0475 10 45
10	50	F0475 10 50
10	55	F0475 10 55
10	60	F0475 10 60
10	65	F0475 10 65
10	70	F0475 10 70
10	75	F0475 10 75
10	80	F0475 10 80
10	85	F0475 10 85
10	90	F0475 10 90
12	100	F0475 12 100
12	120	F0475 12 120
12	14	F0475 12 14
12	140	F0475 12 140
12	18	F0475 12 18
12	26	F0475 12 26
12	28	F0475 12 28
12	30	F0475 12 30
12	32	F0475 12 32
12	36	F0475 12 36
12	40	F0475 12 40
12	45	F0475 12 45
12	50	F0475 12 50
12	55	F0475 12 55
12	60	F0475 12 60
12	70	F0475 12 70
12	80	F0475 12 80

SPINE ELASTICHE GREZZE



Spine elastiche

- A norma DIN 1481/ISO 8752
- In acciaio per molle grezzo



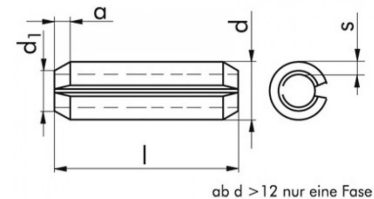
Ø	Lunghezza	Art.
12	90	F0475 12 90
13	100	F0475 13 100
13	120	F0475 13 120
13	140	F0475 13 140
13	20	F0475 13 20
13	28	F0475 13 28
13	32	F0475 13 32
13	36	F0475 13 36
13	40	F0475 13 40
13	50	F0475 13 50
13	60	F0475 13 60
13	70	F0475 13 70
13	80	F0475 13 80
13	90	F0475 13 90
14	100	F0475 14 100
14	30	F0475 14 30
14	32	F0475 14 32
14	36	F0475 14 36
14	40	F0475 14 40
14	45	F0475 14 45
14	50	F0475 14 50
14	60	F0475 14 60
14	70	F0475 14 70
14	80	F0475 14 80
14	90	F0475 14 90
16	100	F0475 16 100
16	120	F0475 16 120
16	140	F0475 16 140

SPINE ELASTICHE GREZZE



Spine elastiche

- A norma DIN 1481/ISO 8752
- In acciaio per molle grezzo



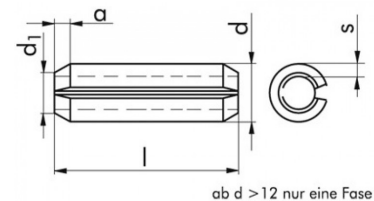
Ø	Lunghezza	Art.
16	160	F0475 16 160
16	18	F0475 16 18
16	24	F0475 16 24
16	28	F0475 16 28
16	30	F0475 16 30
16	32	F0475 16 32
16	36	F0475 16 36
16	40	F0475 16 40
16	45	F0475 16 45
16	50	F0475 16 50
16	55	F0475 16 55
16	60	F0475 16 60
16	65	F0475 16 65
16	70	F0475 16 70
16	75	F0475 16 75
16	80	F0475 16 80
16	85	F0475 16 85
16	90	F0475 16 90
18	70	F0475 18 70
20	100	F0475 20 100
20	120	F0475 20 120
20	140	F0475 20 140
20	16	F0475 20 16
20	160	F0475 20 160
20	200	F0475 20 200
20	30	F0475 20 30
20	36	F0475 20 36
20	40	F0475 20 40

SPINE ELASTICHE GREZZE



Spine elastiche

- A norma DIN 1481/ISO 8752
- In acciaio per molle grezzo



Ø	Lunghezza	Art.
20	45	F0475 20 45
20	50	F0475 20 50
20	55	F0475 20 55
20	60	F0475 20 60
20	65	F0475 20 65
20	70	F0475 20 70
20	75	F0475 20 75
20	80	F0475 20 80
20	85	F0475 20 85
20	90	F0475 20 90
21	100	F0475 21 100
21	120	F0475 21 120
21	140	F0475 21 140
21	16	F0475 21 16
21	20	F0475 21 20
21	24	F0475 21 24
21	28	F0475 21 28
21	32	F0475 21 32
21	40	F0475 21 40
21	50	F0475 21 50
21	60	F0475 21 60
21	80	F0475 21 80
25	100	F0475 250 100
25	120	F0475 250 120
25	140	F0475 250 140
25	160	F0475 250 160
25	180	F0475 250 180
25	200	F0475 250 200

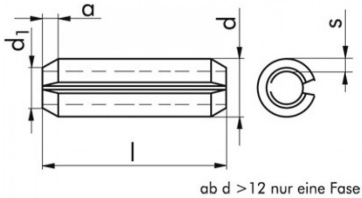
RIPRODUZIONE VIETATA, anche parziale La Fime s.r.l. non assume responsabilità per eventuali inesattezze nel contenuto di questo prospetto e si riserva il diritto di apportare eventuali modifiche ritenute opportune.

SPINE ELASTICHE GREZZE



Spine elastiche

- A norma DIN 1481/ISO 8752
- In acciaio per molle grezzo



Ø	Lunghezza	Art.
25	70	F0475 250 70
25	80	F0475 250 80
25	95	F0475 250 95