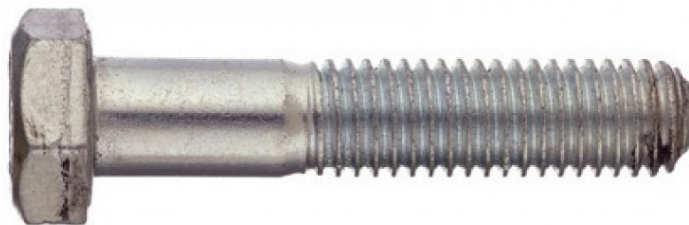
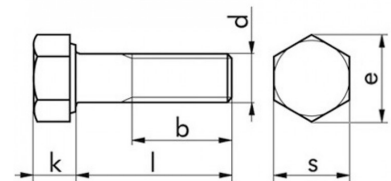


# VITI A TESTA CILINDRICA



Viti a testa cilindrica con esagono incassato  
A norma DIN 912

- In acciaio 8.8
- Finitura FLZNNC (GEOMET)
- Passo MA



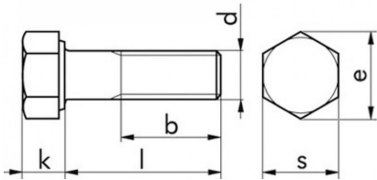
Ø	Lunghezza	Finitura	Art.
m 10	100	flznnc (geomet)	<b>F0084 510 100</b>
m 10	110	flznnc (geomet)	<b>F0084 510 110</b>
m 10	12	flznnc (geomet)	<b>F0084 510 12</b>
m 10	16	flznnc (geomet)	<b>F0084 510 16</b>
m 10	160	flznnc (geomet)	<b>F0084 510 160</b>
m 10	180	flznnc (geomet)	<b>F0084 510 180</b>
m 10	20	flznnc (geomet)	<b>F0084 510 20</b>
m 10	200	flznnc (geomet)	<b>F0084 510 200</b>
m 10	25	flznnc (geomet)	<b>F0084 510 25</b>
m 10	30	flznnc (geomet)	<b>F0084 510 30</b>
m 10	35	flznnc (geomet)	<b>F0084 510 35</b>
m 10	40	flznnc (geomet)	<b>F0084 510 40</b>
m 10	45	flznnc (geomet)	<b>F0084 510 45</b>
m 10	50	flznnc (geomet)	<b>F0084 510 50</b>
m 10	55	flznnc (geomet)	<b>F0084 510 55</b>
m 10	60	flznnc (geomet)	<b>F0084 510 60</b>
m 10	65	flznnc (geomet)	<b>F0084 510 65</b>
m 10	70	flznnc (geomet)	<b>F0084 510 70</b>
m 10	80	flznnc (geomet)	<b>F0084 510 80</b>
m 10	90	flznnc (geomet)	<b>F0084 510 90</b>
m 12	100	flznnc (geomet)	<b>F0084 512 100</b>
m 12	110	flznnc (geomet)	<b>F0084 512 110</b>
m 12	120	flznnc (geomet)	<b>F0084 512 120</b>
m 12	130	flznnc (geomet)	<b>F0084 512 130</b>
m 12	140	flznnc (geomet)	<b>F0084 512 140</b>
m 12	150	flznnc (geomet)	<b>F0084 512 150</b>
m 12	160	flznnc (geomet)	<b>F0084 512 160</b>
m 12	190	flznnc (geomet)	<b>F0084 512 190</b>

# VITI A TESTA CILINDRICA



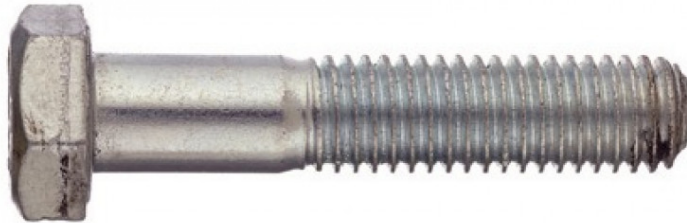
Viti a testa cilindrica con esagono incassato  
A norma DIN 912

- In acciaio 8.8
- Finitura FLZNNC (GEOMET)
- Passo MA



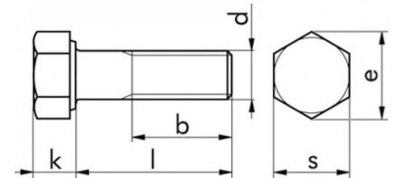
Ø	Lunghezza	Finitura	Art.
m 12	20	flznnc (geomet)	F0084 512 20
m 12	200	flznnc (geomet)	F0084 512 200
m 12	220	flznnc (geomet)	F0084 512 220
m 12	240	flznnc (geomet)	F0084 512 240
m 12	25	flznnc (geomet)	F0084 512 25
m 12	30	flznnc (geomet)	F0084 512 30
m 12	35	flznnc (geomet)	F0084 512 35
m 12	40	flznnc (geomet)	F0084 512 40
m 12	45	flznnc (geomet)	F0084 512 45
m 12	50	flznnc (geomet)	F0084 512 50
m 12	55	flznnc (geomet)	F0084 512 55
m 12	60	flznnc (geomet)	F0084 512 60
m 12	65	flznnc (geomet)	F0084 512 65
m 12	70	flznnc (geomet)	F0084 512 70
m 12	75	flznnc (geomet)	F0084 512 75
m 12	80	flznnc (geomet)	F0084 512 80
m 12	85	flznnc (geomet)	F0084 512 85
m 12	90	flznnc (geomet)	F0084 512 90
m 12	35	flznnc (geomet)	F0084 181 235
m 14	40	flznnc (geomet)	F0084 514 40
m 14	45	flznnc (geomet)	F0084 514 45
m 14	50	flznnc (geomet)	F0084 514 50
m 14	55	flznnc (geomet)	F0084 514 55
m 14	60	flznnc (geomet)	F0084 514 60
m 14	65	flznnc (geomet)	F0084 514 65
m 14	70	flznnc (geomet)	F0084 514 70
m 14	75	flznnc (geomet)	F0084 514 75
m 14	90	flznnc (geomet)	F0084 514 90

## VITI A TESTA CILINDRICA



Viti a testa cilindrica con esagono incassato  
A norma DIN 912

- In acciaio 8.8
- Finitura FLZNNC (GEOMET)
- Passo MA



Ø	Lunghezza	Finitura	Art.
m 16	100	flznnc (geomet)	<b>F0084 516 100</b>
m 16	120	flznnc (geomet)	<b>F0084 516 120</b>
m 16	140	flznnc (geomet)	<b>F0084 516 140</b>
m 16	160	flznnc (geomet)	<b>F0084 516 160</b>
m 16	20	flznnc (geomet)	<b>F0084 516 20</b>
m 16	200	flznnc (geomet)	<b>F0084 516 200</b>
m 16	25	flznnc (geomet)	<b>F0084 516 25</b>
m 16	30	flznnc (geomet)	<b>F0084 516 30</b>
m 16	35	flznnc (geomet)	<b>F0084 516 35</b>
m 16	40	flznnc (geomet)	<b>F0084 516 40</b>
m 16	45	flznnc (geomet)	<b>F0084 516 45</b>
m 16	50	flznnc (geomet)	<b>F0084 516 50</b>
m 16	55	flznnc (geomet)	<b>F0084 516 55</b>
m 16	60	flznnc (geomet)	<b>F0084 516 60</b>
m 16	70	flznnc (geomet)	<b>F0084 516 70</b>
m 16	75	flznnc (geomet)	<b>F0084 516 75</b>
m 16	80	flznnc (geomet)	<b>F0084 516 80</b>
m 16	90	flznnc (geomet)	<b>F0084 516 90</b>
m 18	80	flznnc (geomet)	<b>F0084 518 80</b>
m 20	100	flznnc (geomet)	<b>F0084 520 100</b>
m 20	110	flznnc (geomet)	<b>F0084 520 110</b>
m 20	120	flznnc (geomet)	<b>F0084 520 120</b>
m 20	140	flznnc (geomet)	<b>F0084 520 140</b>
m 20	180	flznnc (geomet)	<b>F0084 520 180</b>
m 20	200	flznnc (geomet)	<b>F0084 520 200</b>
m 20	220	flznnc (geomet)	<b>F0084 520 220</b>
m 20	40	flznnc (geomet)	<b>F0084 520 40</b>
m 20	45	flznnc (geomet)	<b>F0084 520 45</b>

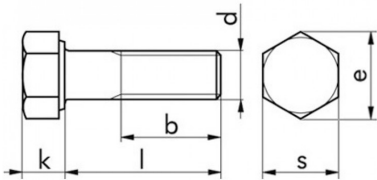
RIPRODUZIONE VIETATA, anche parziale La Fine s.r.l. non assume responsabilità per eventuali inesattezze nel contenuto di questo prospetto e si riserva il diritto di apportare eventuali modifiche ritenute opportune.

# VITI A TESTA CILINDRICA



Viti a testa cilindrica con esagono incassato  
A norma DIN 912

- In acciaio 8.8
- Finitura FLZNNC (GEOMET)
- Passo MA



Ø	Lunghezza	Finitura	Art.
m 20	50	flznnc (geomet)	F0084 520 50
m 20	55	flznnc (geomet)	F0084 520 55
m 20	60	flznnc (geomet)	F0084 520 60
m 20	70	flznnc (geomet)	F0084 520 70
m 20	80	flznnc (geomet)	F0084 520 80
m 20	90	flznnc (geomet)	F0084 520 90
m 24	140	flznnc (geomet)	F0084 524 140
m 24	45	flznnc (geomet)	F0084 524 45
m 24	50	flznnc (geomet)	F0084 524 50
m 24	60	flznnc (geomet)	F0084 524 60
m 24	70	flznnc (geomet)	F0084 524 70
m 4	10	flznnc (geomet)	F0084 54 10
m 4	12	flznnc (geomet)	F0084 54 12
m 4	14	flznnc (geomet)	F0084 54 14
m 4	16	flznnc (geomet)	F0084 54 16
m 4	20	flznnc (geomet)	F0084 54 20
m 4	25	flznnc (geomet)	F0084 54 25
m 4	30	flznnc (geomet)	F0084 54 30
m 4	35	flznnc (geomet)	F0084 54 35
m 4	40	flznnc (geomet)	F0084 54 40
m 5	10	flznnc (geomet)	F0084 55 10
m 5	12	flznnc (geomet)	F0084 55 12
m 5	14	flznnc (geomet)	F0084 55 14
m 5	16	flznnc (geomet)	F0084 55 16
m 5	20	flznnc (geomet)	F0084 55 20
m 5	22	flznnc (geomet)	F0084 55 22
m 5	25	flznnc (geomet)	F0084 55 25
m 5	30	flznnc (geomet)	F0084 55 30

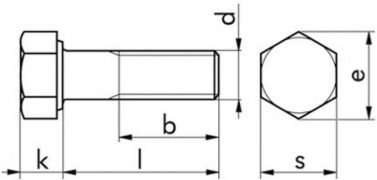
RIPRODUZIONE VIETATA, anche parziale La Fime s.r.l. non assume responsabilità per eventuali inesattezze nel contenuto di questo prospetto e si riserva il diritto di apportare eventuali modifiche ritenute opportune.

# VITI A TESTA CILINDRICA



Viti a testa cilindrica con esagono incassato  
A norma DIN 912

- In acciaio 8.8
- Finitura FLZNNC (GEOMET)
- Passo MA



Ø	Lunghezza	Finitura	Art.
m 5	35	flznnc (geomet)	F0084 55 35
m 5	40	flznnc (geomet)	F0084 55 40
m 5	45	flznnc (geomet)	F0084 55 45
m 5	50	flznnc (geomet)	F0084 55 50
m 5	55	flznnc (geomet)	F0084 55 55
m 5	6	flznnc (geomet)	F0084 55 6
m 5	60	flznnc (geomet)	F0084 55 60
m 5	65	flznnc (geomet)	F0084 55 65
m 5	70	flznnc (geomet)	F0084 55 70
m 5	8	flznnc (geomet)	F0084 55 8
m 5	80	flznnc (geomet)	F0084 55 80
m 5	90	flznnc (geomet)	F0084 55 90
m 6	10	flznnc (geomet)	F0084 56 10
m 6	12	flznnc (geomet)	F0084 56 12
m 6	14	flznnc (geomet)	F0084 56 14
m 6	16	flznnc (geomet)	F0084 56 16
m 6	20	flznnc (geomet)	F0084 56 20
m 6	25	flznnc (geomet)	F0084 56 25
m 6	30	flznnc (geomet)	F0084 56 30
m 6	35	flznnc (geomet)	F0084 56 35
m 6	40	flznnc (geomet)	F0084 56 40
m 6	45	flznnc (geomet)	F0084 56 45
m 6	50	flznnc (geomet)	F0084 56 50
m 6	55	flznnc (geomet)	F0084 56 55
m 6	60	flznnc (geomet)	F0084 56 60
m 6	65	flznnc (geomet)	F0084 56 65
m 6	70	flznnc (geomet)	F0084 56 70
m 6	8	flznnc (geomet)	F0084 56 8

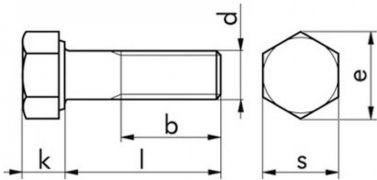
RIPRODUZIONE VIETATA, anche parziale La Fine s.r.l. non assume responsabilità per eventuali inesattezze nel contenuto di questo prospetto e si riserva il diritto di apportare eventuali modifiche ritenute opportune.

# VITI A TESTA CILINDRICA



Viti a testa cilindrica con esagono incassato  
A norma DIN 912

- In acciaio 8.8
- Finitura FLZNNC (GEOMET)
- Passo MA



Ø	Lunghezza	Finitura	Art.
m 6	80	flznnc (geomet)	F0084 56 80
m 6	10	flznnc (geomet)	F0084 56 90
m 8	10	flznnc (geomet)	F0084 58 10
m 8	100	flznnc (geomet)	F0084 58 100
m 8	110	flznnc (geomet)	F0084 58 110
m 8	12	flznnc (geomet)	F0084 58 12
m 8	120	flznnc (geomet)	F0084 58 120
m 8	130	flznnc (geomet)	F0084 58 130
m 8	140	flznnc (geomet)	F0084 58 140
m 8	150	flznnc (geomet)	F0084 58 150
m 8	16	flznnc (geomet)	F0084 58 16
m 8	180	flznnc (geomet)	F0084 58 180
m 8	20	flznnc (geomet)	F0084 58 20
m 8	200	flznnc (geomet)	F0084 58 200
m 8	25	flznnc (geomet)	F0084 58 25
m 8	30	flznnc (geomet)	F0084 58 30
m 8	35	flznnc (geomet)	F0084 58 35
m 8	40	flznnc (geomet)	F0084 58 40
m 8	45	flznnc (geomet)	F0084 58 45
m 8	50	flznnc (geomet)	F0084 58 50
m 8	55	flznnc (geomet)	F0084 58 55
m 8	60	flznnc (geomet)	F0084 58 60
m 8	65	flznnc (geomet)	F0084 58 65
m 8	70	flznnc (geomet)	F0084 58 70
m 8	80	flznnc (geomet)	F0084 58 80
m 8	90	flznnc (geomet)	F0084 58 90