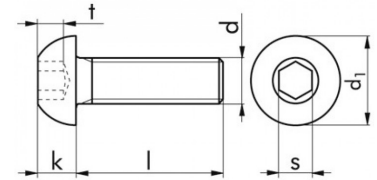


A close-up photograph of a metal screw, likely made of steel, showing its hexagonal head and the threaded portion of the shaft. The screw is oriented horizontally, with the head on the left and the threads extending to the right. The lighting highlights the metallic texture and the sharp edges of the threads.

- A norma ISO 7380-1
- In acciaio 010.9 FLZNNC (GEOMET)
- Passo grosso metrico MA
- Interamente filettate



| Ø | Lunghezza | Art. |
|-----|-----------|--------------|
| m10 | 16 | F2084 710 16 |
| m10 | 20 | F2084 710 20 |
| m10 | 25 | F2084 710 25 |
| m10 | 30 | F2084 710 30 |
| m10 | 35 | F2084 710 35 |
| m10 | 40 | F2084 710 40 |
| m10 | 45 | F2084 710 45 |
| m4 | 10 | F2084 74 10 |
| m4 | 12 | F2084 74 12 |
| m4 | 16 | F2084 74 16 |
| m4 | 20 | F2084 74 20 |
| m4 | 6 | F2084 74 6 |
| m4 | 8 | F2084 74 8 |
| m5 | 10 | F2084 75 10 |
| m5 | 12 | F2084 75 12 |
| m5 | 16 | F2084 75 16 |
| m5 | 20 | F2084 75 20 |
| m5 | 25 | F2084 75 25 |
| m5 | 30 | F2084 75 30 |
| m5 | 8 | F2084 75 8 |
| m6 | 10 | F2084 76 10 |
| m6 | 12 | F2084 76 12 |
| m6 | 16 | F2084 76 16 |
| m6 | 18 | F2084 76 18 |
| m6 | 20 | F2084 76 20 |
| m6 | 25 | F2084 76 25 |
| m6 | 30 | F2084 76 30 |
| m6 | 35 | F2084 76 35 |

| Ø | Lunghezza | Art. |
|----|-----------|--------------------|
| m6 | 40 | F2084 76 40 |
| m6 | 50 | F2084 76 50 |
| m6 | 8 | F2084 76 8 |
| m8 | 10 | F2084 78 10 |
| m8 | 12 | F2084 78 12 |
| m8 | 14 | F2084 78 14 |
| m8 | 16 | F2084 78 16 |
| m8 | 20 | F2084 78 20 |
| m8 | 25 | F2084 78 25 |
| m8 | 30 | F2084 78 30 |
| m8 | 35 | F2084 78 35 |
| m8 | 40 | F2084 78 40 |
| m8 | 50 | F2084 78 50 |