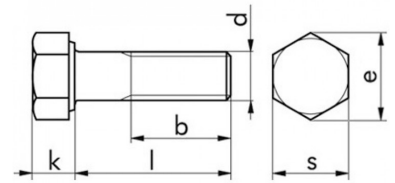
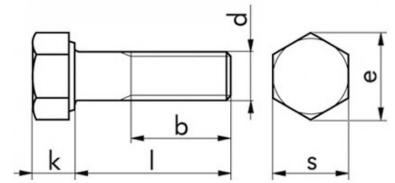


## A close-up photograph of a metal bolt, likely made of steel, showing its hexagonal head and threaded shaft. The bolt is oriented horizontally, with the head on the left and the threads extending to the right. The surface of the metal appears slightly worn and has a greyish-blue patina.



Din	Finitura	Lunghezza	Materiale	Ø	Art.
					<b>F3060 003 10</b>
					<b>F3060 003 12</b>
					<b>F3060 003 16</b>
7380	zincata bianca	20	acciaio 010.9	m 3	<b>F3060 003 20</b>
					<b>F3060 003 6</b>
					<b>F3060 003 8</b>
					<b>F3060 004 10</b>
					<b>F3060 004 12</b>
					<b>F3060 004 16</b>
					<b>F3060 004 20</b>
					<b>F3060 004 25</b>
					<b>F3060 004 35</b>
					<b>F3060 004 40</b>
					<b>F3060 004 6</b>
					<b>F3060 004 8</b>
					<b>F3060 005 10</b>
					<b>F3060 005 12</b>
7380	zincata bianca	16	acciaio 010.9	m 5	<b>F3060 005 16</b>
					<b>F3060 005 20</b>
					<b>F3060 005 25</b>
					<b>F3060 005 30</b>
					<b>F3060 005 6</b>
					<b>F3060 005 8</b>
					<b>F3060 006 10</b>
					<b>F3060 006 12</b>
7380	zincata bianca	16	acciaio 010.9	m 6	<b>F3060 006 16</b>
					<b>F3060 006 18</b>
					<b>F3060 006 20</b>

## A close-up photograph of a metal bolt, likely made of steel, showing its hexagonal head and threaded shaft. The bolt is oriented horizontally, with the head on the left and the threads extending to the right. The surface of the metal appears slightly worn and has a greyish-blue patina.



Din	Finitura	Lunghezza	Materiale	Ø	Art.
					<b>F3060 006 22</b>
7380	zincata bianca	25	acciaio 010.9	m 6	<b>F3060 006 25</b>
					<b>F3060 006 30</b>
					<b>F3060 006 35</b>
					<b>F3060 006 40</b>
					<b>F3060 006 45</b>
					<b>F3060 006 50</b>
					<b>F3060 006 55</b>
					<b>F3060 006 6</b>
					<b>F3060 006 60</b>
					<b>F3060 006 8</b>
					<b>F3060 008 10</b>
					<b>F3060 008 12</b>
					<b>F3060 008 16</b>
					<b>F3060 008 20</b>
					<b>F3060 008 25</b>
					<b>F3060 008 30</b>
					<b>F3060 008 35</b>
					<b>F3060 008 40</b>
					<b>F3060 008 50</b>
					<b>F3060 008 60</b>
					<b>F3060 008 65</b>
					<b>F3060 008 70</b>
					<b>F3060 008 80</b>