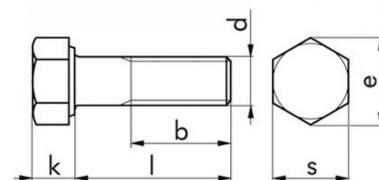


VITI METRICHE E GR5 GREZZE PARZ. FILETTATE DIN ANSI B 18.2.1 POLLICI UNF



Viti in pollici a testa esagonale parzialmente filettate

- A norma ANSI B 18.2.1
- In acciaio GR 5 grezzo (brunito)
- Passo pollici UNF



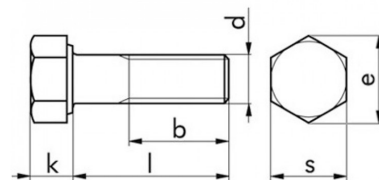
| Lunghezza | Ø | Art. |
|-----------|-----|---------------------|
| 1 | 1/2 | F1071 12 1 |
| 1 1/2 | 1/2 | F1071 12 112 |
| 1 1/4 | 1/2 | F1071 12 114 |
| 1 3/4 | 1/2 | F1071 12 134 |
| 2 | 1/2 | F1071 12 2 |
| 2 1/2 | 1/2 | F1071 12 212 |
| 3 | 1/2 | F1071 12 3 |
| 3 1/2 | 1/2 | F1071 12 312 |
| 3/4 | 1/2 | F1071 12 34 |
| 4 | 1/2 | F1071 12 4 |
| 4 1/2 | 1/2 | F1071 12 412 |
| 1 | 1/4 | F1071 14 1 |
| 1 1/2 | 1/4 | F1071 14 112 |
| 1 1/4 | 1/4 | F1071 14 114 |
| 1/2 | 1/4 | F1071 14 12 |
| 1 3/4 | 1/4 | F1071 14 134 |
| 2 | 1/4 | F1071 14 2 |
| 2 1/2 | 1/4 | F1071 14 212 |
| 2 1/4 | 1/4 | F1071 14 214 |
| 2 3/4 | 1/4 | F1071 14 234 |
| 3 | 1/4 | F1071 14 3 |
| 3/4 | 1/4 | F1071 14 34 |
| 5/8 | 1/4 | F1071 14 58 |
| 7/8 | 1/4 | F1071 14 78 |
| 1 | 3/4 | F1071 34 1 |
| 1 1/2 | 3/4 | F1071 34 112 |
| 1 1/4 | 3/4 | F1071 34 114 |
| 1 3/4 | 3/4 | F1071 34 134 |

VITI METRICHE TE GR5 GREZZE PARZ. FILETTATE DIN ANSI B 18.2.1 POLLICI UNF



Viti in pollici a testa esagonale parzialmente filettate

- A norma ANSI B 18.2.1
- In acciaio GR 5 grezzo (brunito)
- Passo pollici UNF



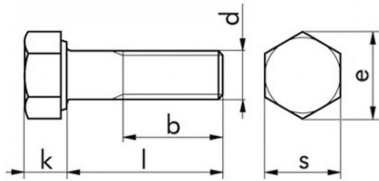
| Lunghezza | Ø | Art. |
|-----------|------|--------------|
| 2 | 3/4 | F1071 34 2 |
| 2 1/2 | 3/4 | F1071 34 212 |
| 2 1/4 | 3/4 | F1071 34 214 |
| 2 3/4 | 3/4 | F1071 34 234 |
| 3 | 3/4 | F1071 34 3 |
| 3 1/2 | 3/4 | F1071 34 312 |
| 4 | 3/4 | F1071 34 4 |
| 4 1/2 | 3/4 | F1071 34 412 |
| 5 | 3/4 | F1071 34 5 |
| 5 1/2 | 3/4 | F1071 34 512 |
| 6 | 3/4 | F1071 34 6 |
| 7 | 3/4 | F1071 34 7 |
| 1 | 3/8 | F1071 38 1 |
| 1 1/2 | 3/8 | F1071 38 112 |
| 1 1/4 | 3/8 | F1071 38 114 |
| 1 3/4 | 3/8 | F1071 38 134 |
| 2 | 3/8 | F1071 38 2 |
| 2 1/2 | 3/8 | F1071 38 212 |
| 2 1/4 | 3/8 | F1071 38 214 |
| 2 3/4 | 3/8 | F1071 38 234 |
| 3 | 3/8 | F1071 38 3 |
| 3 1/2 | 3/8 | F1071 38 312 |
| 3 1/4 | 3/8 | F1071 38 314 |
| 3/4 | 3/8 | F1071 38 34 |
| 4 | 3/8 | F1071 38 4 |
| 5/8 | 3/8 | F1071 38 58 |
| 7/8 | 3/8 | F1071 38 78 |
| 1 | 5/16 | F1071 516 1 |

VITI METRICHE TE GR5 GREZZE PARZ. FILETTATE
DIN ANSI B 18.2.1 POLLICI UNF



Viti in pollici a testa esagonale parzialmente filettate

- A norma ANSI B 18.2.1
- In acciaio GR 5 grezzo (brunito)
- Passo pollici UNF



| Lunghezza | Ø | Art. |
|-----------|------|---------------|
| 1 1/2 | 5/16 | F1071 516 112 |
| 1 1/4 | 5/16 | F1071 516 114 |
| 1/2 | 5/16 | F1071 516 12 |
| 1 3/4 | 5/16 | F1071 516 134 |
| 2 | 5/16 | F1071 516 2 |
| 2 1/2 | 5/16 | F1071 516 212 |
| 2 1/4 | 5/16 | F1071 516 214 |
| 2 3/4 | 5/16 | F1071 516 234 |
| 3 | 5/16 | F1071 516 3 |
| 3 1/2 | 5/16 | F1071 516 312 |
| 3/4 | 5/16 | F1071 516 34 |
| 4 | 5/16 | F1071 516 4 |
| 5/8 | 5/16 | F1071 516 58 |
| 7/8 | 5/16 | F1071 516 78 |
| 1 1/2 | 5/8 | F1071 58 112 |
| 1 3/4 | 5/8 | F1071 58 134 |
| 2 | 5/8 | F1071 58 2 |
| 2 1/2 | 5/8 | F1071 58 212 |
| 2 1/4 | 5/8 | F1071 58 214 |
| 2 3/4 | 5/8 | F1071 58 234 |
| 3 | 5/8 | F1071 58 3 |
| 3 1/2 | 5/8 | F1071 58 312 |
| 4 | 5/8 | F1071 58 4 |
| 4 1/2 | 5/8 | F1071 58 412 |
| 5 | 5/8 | F1071 58 5 |
| 5 1/2 | 5/8 | F1071 58 512 |
| 6 | 5/8 | F1071 58 6 |
| 1 | 7/16 | F1071 716 1 |

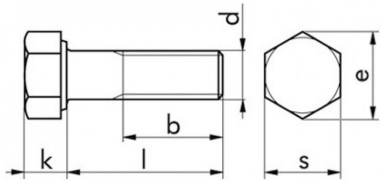
RIPRODUZIONE VIETATA, anche parziale La Fime s.r.l. non assume responsabilità per eventuali inesattezze nel contenuto di questo prospetto e si riserva il diritto di apportare eventuali modifiche ritenute opportune.

**VITI METRICHE TE GR5 GREZZE PARZ. FILETTATE
DIN ANSI B 18.2.1 POLLICI UNF**



Viti in pollici a testa esagonale parzialmente filettate

- A norma ANSI B 18.2.1
- In acciaio GR 5 grezzo (brunito)
- Passo pollici UNF



| Lunghezza | Ø | Art. |
|-----------|------|---------------|
| 1 1/2 | 7/16 | F1071 716 112 |
| 1 1/4 | 7/16 | F1071 716 114 |
| 1 3/4 | 7/16 | F1071 716 134 |
| 2 | 7/16 | F1071 716 2 |
| 2 1/2 | 7/16 | F1071 716 212 |
| 3 | 7/16 | F1071 716 3 |
| 3/4 | 7/16 | F1071 716 34 |
| 7/8 | 7/16 | F1071 716 78 |
| 2 | 7/8 | F1071 78 2 |
| 2 1/2 | 7/8 | F1071 78 212 |
| 3 | 7/8 | F1071 78 3 |
| 3 1/2 | 7/8 | F1071 78 312 |
| 4 | 7/8 | F1071 78 4 |
| 4 1/2 | 7/8 | F1071 78 412 |
| 5 | 7/8 | F1071 78 5 |
| 6 | 7/8 | F1071 78 6 |
| 7 | 7/8 | F1071 78 7 |
| 1 1/2 | 9/16 | F1071 916 112 |
| 1 3/4 | 9/16 | F1071 916 134 |
| 2 | 9/16 | F1071 916 2 |
| 2 1/2 | 9/16 | F1071 916 212 |
| 2 1/4 | 9/16 | F1071 916 214 |
| 3 | 9/16 | F1071 916 3 |
| 4 | 9/16 | F1071 916 4 |

