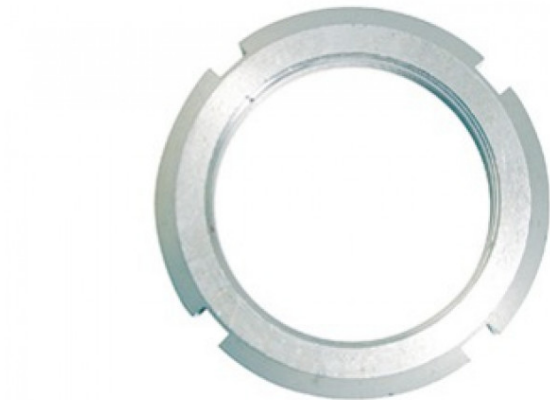
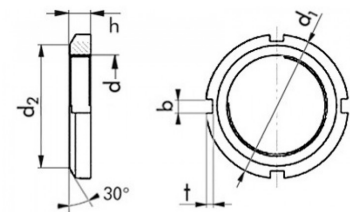


GHIERE DI BLOCCAGGIO TIPO KM



Ghiere di bloccaggio tipo KM

- A norma DIN 981
- In acciaio zincato bianco
- Passo metrico



Ø	Art.
m 30	F0374 030 15
m 35	F0374 035 15
m 40	F0374 040 15
m 45	F0374 045 15
m 50	F0374 050 15
m 55	F0374 055 2
m 80	F0374 080 2